

Prolog a Finale

pro 2 fléty a symfonický orchestru

(1972)

Durata ca 12'

4 Maestoso (! =)

Prolog

2

Fl 1
Fl 2

Violini
1
2

Viola
(4)

Vcl
(2)

Cb
(1-2)

ff poco rit

1 Largo (! = 60)

pp con ind.

pp con ind.

pp con ind.

pp

ppp

pp

p

Handwritten musical score system 1, consisting of four staves. The top two staves are in treble clef, and the bottom two are in bass clef. The music features various notes, rests, and dynamic markings such as *pp* and *ppp*. There are also some bracketed annotations and a circled '2' above the system.

Handwritten musical score system 2, consisting of four staves. The top two staves are in treble clef, and the bottom two are in bass clef. The music continues with various notes and rests. Dynamic markings include *pp* and *ppp*. A circled '2' is visible above the system.

Handwritten musical score system 3, consisting of four staves. The top two staves are in treble clef, and the bottom two are in bass clef. The music features various notes and rests. Dynamic markings include *ppp*. The text "senza for." and "senza cord." is written above the staves. A circled '4' is visible above the system.

Handwritten musical score for a single system. The top staff is in treble clef and contains a melodic line with various notes and rests. The bottom staff is in bass clef and contains a bass line. There are dynamic markings such as *p* and *ppp*. A handwritten note "senza scord." is written above the right side of the staff.

Handwritten musical score for a multi-staff system. It begins with the tempo marking "Maestoso (! = 60)". The system consists of five staves. The top four staves are in treble clef and contain complex rhythmic patterns with many notes and accents. The bottom staff is in bass clef and contains a bass line. Dynamic markings include *ff* and *f*. There are also some handwritten annotations like "1" and "2" above the staves.

Handwritten musical score for a multi-staff system. It begins with the tempo marking "Largo (! = 60)". The system consists of five staves. The top four staves are in treble clef and contain complex rhythmic patterns with many notes and accents. The bottom staff is in bass clef and contains a bass line. Dynamic markings include *pp*, *mf*, and *ppp*. There are also some handwritten annotations like "1" above the staves and "sempre rit." written at the end of the system.

Handwritten musical score for the first system. It features a vocal line with lyrics and a piano accompaniment. The lyrics include "no p'no in". The piano part has a wavy line indicating a tremolo or sustained texture. The system concludes with a double bar line.

Handwritten musical score for the second system. It includes a vocal line with lyrics "senza mod." and "pppp". The piano accompaniment continues with a wavy line. The system ends with a double bar line.

Handwritten musical score for the third system, starting with a tempo marking "2 4 Maestoso (! =)". The system includes parts for Flute (Fl), Solo, Violin (Vcln), Viola (Vcl), Violoncello (Vcl), and Contrabasso (Cb). The music is characterized by dense rhythmic patterns and dynamic markings such as "senza mod." and "pppp". The system concludes with a double bar line and a sharp sign (#).

Handwritten musical score for the first system, featuring two staves with treble clefs and a grand staff below. The top staff contains a melodic line with dynamic markings *p* and *mf*, and a circled number '8'. The grand staff below shows piano accompaniment with various chords and dynamics including *mf* and *p*.

Handwritten musical score for the second system, featuring two staves with treble clefs and a grand staff below. The top staff contains a melodic line with dynamic markings *p* and *pp*. The grand staff below shows piano accompaniment with various chords and dynamics including *pp* and *ppp*.

Handwritten musical score for the first system. It includes staves for Flute (Fl), Violin (Vcln), Viola (Vcl), Cello (Cll), and Double Bass (Cb). The Flute part features a melodic line with dynamics *p*, *pp*, and *ppp*, and includes a sixteenth-note triplet. The Violin and Viola parts are marked *arco* and *ppp*. The Cello and Double Bass parts are also marked *ppp*. The system concludes with a double bar line.

Handwritten musical score for the second system, primarily for the Flute (Fl) part. It begins with a dynamic of *p* and includes a triplet of sixteenth notes. The melody continues with various dynamics including *pp* and *ppp*. The system ends with a double bar line.

10) Maestoso (=)

Handwritten musical score for the first system, featuring five staves:

- Tr** (Trumpet): Two staves with melodic lines and dynamic markings.
- Id.** (Violin): Two staves with melodic lines and dynamic markings.
- Viol.** (Viola): One staff with melodic lines and dynamic markings.
- Co.** (Cello): One staff with melodic lines and dynamic markings.

The score includes various musical notations such as slurs, accents, and dynamic markings like *ff* and *f*.

Handwritten musical score for the second system, featuring five staves:

- Tr** (Trumpet): Two staves with melodic lines and dynamic markings.
- Viol.** (Viola): One staff with melodic lines and dynamic markings.
- Co.** (Cello): One staff with melodic lines and dynamic markings.

The score includes various musical notations such as slurs, accents, and dynamic markings like *mf*, *f*, and *p*.

(11) Largo (♩=60)

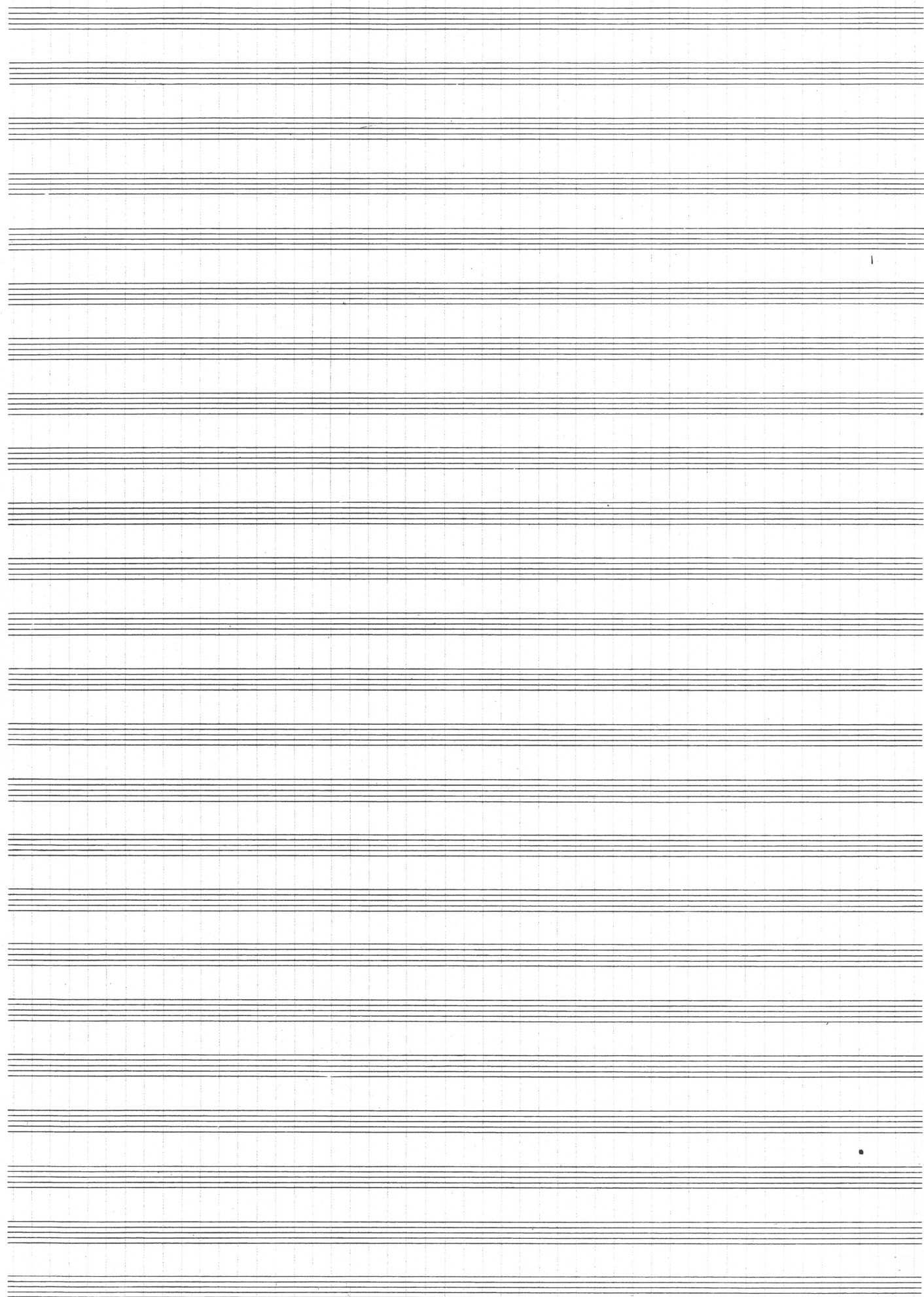
Fr

Handwritten musical score for the first system, featuring five staves. The notation includes notes, rests, and dynamic markings such as *ppp* and *con ind.*. A fermata is present over a note in the second measure. A bracketed section on the right side of the system contains a triplet of notes.

Handwritten musical score for the second system, featuring five staves. The notation includes notes, rests, and dynamic markings such as *ppp* and *con ind.*. The score includes various rhythmic values and rests across the staves.

Handwritten musical score for the first system, consisting of five staves. The notation includes various notes, rests, and dynamic markings. The first staff begins with a treble clef and a sharp sign. The second staff has a piano (*p*) dynamic marking. The third staff is marked *pp* and contains a slur over a series of notes, with a '1' written below. The fourth staff has a piano (*p*) dynamic marking. The fifth staff has a piano (*p*) dynamic marking. There are also some bracketed sections and a fermata-like symbol.

Handwritten musical score for the second system, consisting of five staves. The notation includes notes, rests, and dynamic markings. The first staff has a treble clef and a sharp sign. The second staff has a *ppp* dynamic marking. The third staff has a *ppp* dynamic marking. The fourth staff has a *ppp* dynamic marking. The fifth staff has a *ppp* dynamic marking. The system ends with a double bar line and the handwritten text "ce 6' 30\"".



finale

Allegro ritmico e solenne (♩ = ca 120-126)

>>> finale

1 Fl *ff* 3

2 Fl *ff marc.*

1 idlin *pp. f*

2 idlin

viol

viol *piu. $\frac{3}{4}$ (alla Bartok)*

cel *pp. f*

cb

1 Fl

2 Fl

1 idlin *f*

2 idlin *pp. f*

viol *arco*

viol *arco*

viol

cel

cb

1

Handwritten musical score for the first system, featuring:

- Flute (Fl):** Two staves with complex rhythmic patterns and dynamic markings of *mf* and *mf con sord.*
- Violins (Violini):** Two staves with melodic lines and dynamic markings of *f*.
- Violoncello (Vcllo):** One staff with melodic lines and dynamic markings of *f*.
- Contrabasso (Cb):** One staff with a bass line, dynamic marking of *mf*, and the instruction *arco*.

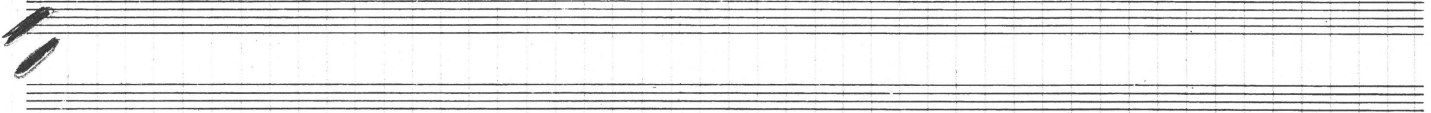
Handwritten musical score for the second system, featuring:

- Flute (Fl):** Two staves with complex rhythmic patterns and dynamic markings of *sub. f.*
- Violins (Violini):** Two staves with melodic lines and dynamic markings of *f*. Includes the instruction *gliss. sul A*.
- Violoncello (Vcllo):** One staff with melodic lines and dynamic markings of *f*.
- Contrabasso (Cb):** One staff with a bass line and dynamic markings of *f*.

2

Handwritten musical score for the first system, featuring five staves:

- Flute (Fl):** Treble clef, notes with accents and slurs.
- Violin (Vcln):** Treble clef, notes with accents and slurs.
- Viola (Vcl):** Bass clef, notes with accents and slurs.
- Violoncello (Vcl):** Bass clef, notes with accents and slurs.
- Contra Bass (Cb):** Bass clef, notes with accents and slurs, including dynamic markings *ff* and *sub-p*.



Handwritten musical score for the second system, featuring two staves:

- Violoncello (Vcl):** Bass clef, notes with accents and slurs, including dynamic markings *ff* and *sub-p*.
- Contra Bass (Cb):** Bass clef, notes with accents and slurs, including dynamic markings *ff* and *sub-p*.

3

Violin I

p espressivo

Violin II

p

Cello

Violin I

Violin II

Cello

3 4

3 4

mf

mf

mf

4

3

3

mf espressivo

mf... spicc.

mf

mf

4 3

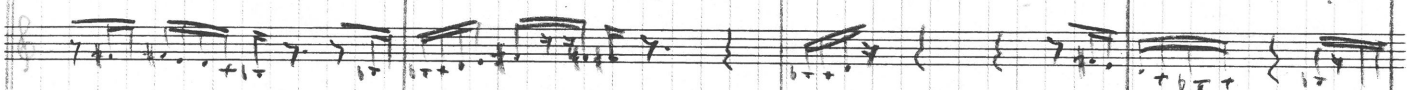
4 3

violin

2



viola



cello

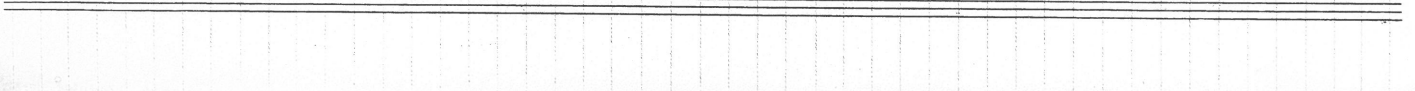
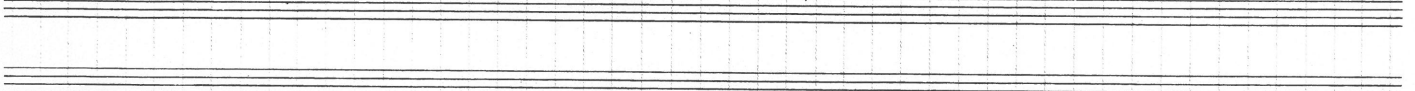
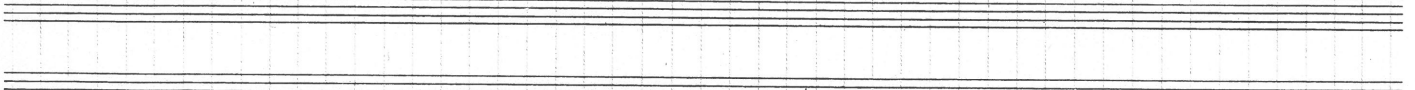
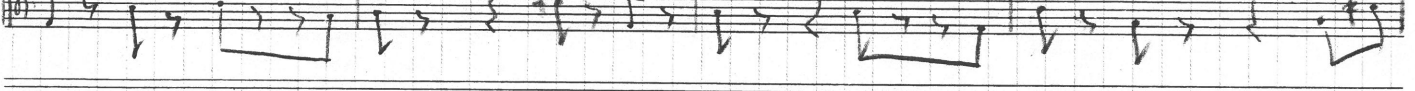
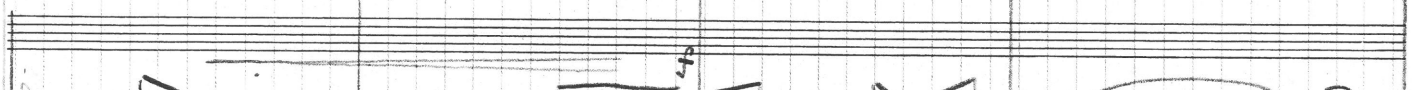


double bass



4

4



5

Handwritten musical score for the first system, consisting of five staves. The top staff is in treble clef with a dynamic marking of *f*. The second staff is in treble clef with a dynamic marking of *mf*. The third staff is in treble clef with a dynamic marking of *mf*. The fourth staff is in bass clef with a dynamic marking of *mf*. The fifth staff is in bass clef with a dynamic marking of *mf*. The score includes various notes, rests, and dynamic markings such as *f* and *mf*. A handwritten note "(molto viv.)" is present in the upper right corner of the system.

5 4

5 4

Handwritten musical score for the second system, consisting of five staves. The top staff is in treble clef with a dynamic marking of *f*. The second staff is in treble clef with a dynamic marking of *mf*. The third staff is in treble clef with a dynamic marking of *mf*. The fourth staff is in bass clef with a dynamic marking of *mf*. The fifth staff is in bass clef with a dynamic marking of *mf*. The score includes various notes, rests, and dynamic markings such as *f* and *mf*. A handwritten note "(molto viv.)" is present in the upper right corner of the system.

(6)

3

4

Handwritten musical score for system 6, measures 1-4. The system begins with a treble clef and a 3/4 time signature. The first staff contains a melodic line with various accidentals and dynamic markings, including *ff* and *f*. The second staff shows a complex rhythmic accompaniment with many beamed notes. The third and fourth staves continue the accompaniment with similar rhythmic density. The fifth staff is a bass line with a steady rhythmic pattern. The system concludes with a double bar line.

(7)

3

1
2

Handwritten musical score for system 7, measures 1-3. The system begins with a treble clef and a 3/4 time signature. The first staff contains a melodic line with various accidentals and dynamic markings, including *ff*, *f*, and *stacc.*. The second staff shows a complex rhythmic accompaniment with many beamed notes. The third and fourth staves continue the accompaniment with similar rhythmic density. The fifth staff is a bass line with a steady rhythmic pattern. The system concludes with a double bar line.

Handwritten musical score for Flute 1 and 2. The score is divided into two systems. The first system has a 4/4 time signature, followed by a 3/4 time signature, and then another 4/4. The second system also starts with a 4/4 time signature. The notation includes complex rhythmic patterns, slurs, and various musical notations such as accents and dynamics.

Handwritten musical score for Flute 1 and 2, continuing from the previous system. The first system of this section has a 4/4 time signature, followed by a circled 8/8 time signature, and then a 3/4 time signature. The second system also has a 4/4 time signature. The notation includes complex rhythmic patterns, slurs, and various musical notations such as accents and dynamics.

Handwritten musical score for two staves, labeled 1 and 2. The notation includes complex rhythmic patterns with many beamed notes and accents. A large bracket spans across the top of both staves, indicating a phrase or section. The key signature has one sharp (F#).

Handwritten musical score for five staves. The notation is dense with many beamed notes and accents. The dynamic marking *ff* (fortissimo) is written multiple times across the staves. A large bracket is present at the top right of the section.

Handwritten musical score for five staves. A circled number '9' is written above the first staff. The notation includes complex rhythmic patterns with many beamed notes and accents. Dynamic markings include *ff* and *frull.* (frullato). A large bracket is present at the top right of the section. The key signature has one sharp (F#).

Handwritten musical score for two staves, labeled 1 and 2. The notation includes complex chords, slurs, and dynamic markings such as *ff* and *fff*. The score is divided into measures by vertical bar lines.

Handwritten musical score for two staves, labeled 1 and 2. The notation includes complex chords, slurs, and dynamic markings such as *ff* and *fff*. A circled number "10" is present above the first staff. The score is divided into measures by vertical bar lines.

7
7
7
7

1

2

fff

fff poco a

(gliss. chromatique)

1

2

fff

a poco decresc. (fff)

Handwritten musical score for a piano piece, measures 1-11. The score is written on six staves. The first staff (treble clef) begins with a fortissimo (**ff**) dynamic and a sixteenth-note chordal texture. A slur over the first six measures is labeled with a circled 'd.'. The second staff (treble clef) continues the texture with various rhythmic patterns. The remaining four staves (alto and bass clefs) provide harmonic support with complex chordal and melodic lines. A diagonal line is drawn across the score between measures 6 and 7. The piece concludes with a fortissimo (**f**) dynamic marking at the end of the system.

Handwritten musical score for a piano piece, measures 12-15. The score is written on six staves. The first staff (treble clef) begins with a circled measure number '12' and a mezzo-forte (**mf**) dynamic. A slur over the first six measures is labeled with a circled 'd.'. The second staff (treble clef) continues the texture with various rhythmic patterns. The remaining four staves (alto and bass clefs) provide harmonic support with complex chordal and melodic lines. A diagonal line is drawn across the score between measures 6 and 7. The piece concludes with a mezzo-forte (**mf**) dynamic marking at the end of the system.

3

4

1 Fl

2 Fl

mf

p

----- (p)

1 Fl

2 Fl

13

p

pp

mute in flauto piccolo

poco rit

pp

pp

pp

pp

pp

(pp)

Handwritten musical score for the first system, featuring five staves. The notation includes various rhythmic values, accidentals, and dynamic markings. The first staff is marked with *ff* and *trull.*. The second staff is marked with *cc*. The third staff has a *non dir.* marking. The fourth and fifth staves contain complex rhythmic patterns with many accents and slurs.

Handwritten musical score for the second system, featuring five staves. The notation includes various rhythmic values, accidentals, and dynamic markings. The first staff is marked with *ff* and *trull.*. The second staff is marked with *trull.* and *poco pesante*. The third staff has a *non dir.* marking. The fourth and fifth staves contain complex rhythmic patterns with many accents and slurs. The word *poco pesante* is written at the bottom of the system.

ce,
H 20