

Petr FIALA

Rondo - koncert

pro dva klariny

(1986)

Presto, molto ritmico - Largo - Presto, molto ritmico - Andante - Presto, molto ritmico

Durata 15'

Petr Fiala

Rondo - koncert

pro dva klavíry

(1986)

Durata 15'

Posurka platí jen pro jednu notu a pro noty ligaturované!

Presto, molto ritmico (♩ = ca 200)

Klavier (solo)

Klavier 2

solo

Kl. 2

solo

2

solo

ke.
2

p

2

solo

ke.
2

mf

ball

solo

ke.
2

mf

Handwritten musical score, first system. It features a treble clef staff with a melodic line and a bass clef staff with a bass line. The music includes various notes, rests, and dynamic markings such as *mf* and *p*. A large slur covers the first few measures. Below the staves, the text "Ped. x" is written.

Handwritten musical score, second system. It consists of two staves. The upper staff has a treble clef and contains a few notes and rests. The lower staff has a bass clef and contains a sequence of notes. A large number "2" is written below the first measure of the lower staff.

Handwritten musical score, third system. It features a treble clef staff with a melodic line and a bass clef staff with a bass line. The music includes various notes, rests, and dynamic markings such as *p*. A large slur covers the first few measures. A large number "2" is written below the first measure of the lower staff.

Handwritten musical score, fourth system. It features a treble clef staff with a melodic line and a bass clef staff with a bass line. The music includes various notes, rests, and dynamic markings such as *p*. A large number "2" is written below the first measure of the lower staff.

Handwritten musical score, fifth system. It consists of two empty staves, one with a treble clef and one with a bass clef.

Handwritten musical score, sixth system. It features a treble clef staff with a melodic line and a bass clef staff with a bass line. The music includes various notes, rests, and dynamic markings such as *mf*. A large number "2" is written below the first measure of the lower staff.

solo

mf

ke. 2

sub. p

ke. 2

solo

ke. 2

solo

Handwritten musical score for the first system. The top staff is in treble clef and the bottom staff is in bass clef. The music is in a key with one sharp (F#) and a common time signature. The notation includes eighth and sixteenth notes, rests, and various accidentals (sharps, naturals, flats). A *solo* marking is present at the beginning.

kl.
2

Handwritten musical score for the second system. The top staff is in treble clef and the bottom staff is in bass clef. The notation is sparse, consisting of several notes and rests. A *kl.* (clarinet) and the number '2' are written on the left side.

solo

Handwritten musical score for the third system. The top staff is in treble clef and the bottom staff is in bass clef. The music is dense with many notes, including a prominent melodic line in the treble staff. A *solo* marking is present. Dynamics markings *p* (piano) are visible.

kl.
2

Handwritten musical score for the fourth system. The top staff is in treble clef and the bottom staff is in bass clef. The notation shows rhythmic patterns with many notes. A *kl.* (clarinet) and the number '2' are written on the left side.

mf.

Handwritten musical score for the fifth system. The top staff is in treble clef and the bottom staff is in bass clef. The music is complex with many notes and accidentals. A *mf.* (mezzo-forte) dynamic marking is present.

Handwritten musical score for the sixth system. The top staff is in treble clef and the bottom staff is in bass clef. The music is complex with many notes and accidentals.

Handwritten musical score for the first system, featuring a grand staff with treble and bass clefs. The music is dense with chords and melodic lines. A dynamic marking *ff* is present in the upper right of the system.

Handwritten musical score for the second system, continuing the piece with complex chordal textures and melodic movement.

Handwritten musical score for the third system, showing a transition in tempo and dynamics. A *Ped...* marking is visible.

poco a poco allargando

Handwritten musical score for the fourth system, featuring a grand staff with some rests and dynamic markings.

Largo (♩ = 56)

Handwritten musical score for the fifth system, marked *Largo*. It features a grand staff with sustained chords and a dynamic marking *ff*.

Handwritten musical score for the sixth system, continuing the *Largo* section with a grand staff.

slc.

-Ped. *

2.

Ped.

pp legato

con Ped.

8

8

8

Handwritten musical score for the first system. The top staff is in treble clef with a key signature of two sharps (F# and C#). It contains several measures of music with notes, rests, and slurs. The bottom staff is in bass clef and contains chordal accompaniment with some slurs and dynamic markings.

Handwritten musical score for the second system. The top staff is in treble clef. A tempo marking "Presto, molto ritardando" is written above the staff, with "(♩ = 200)" below it. The bottom staff is in bass clef and contains dense chordal accompaniment with many notes.

Handwritten musical score for the third system. The top staff is in treble clef and contains several measures of music with notes and slurs. The bottom staff is in bass clef and contains accompaniment with notes and slurs. There are dynamic markings like "mf" and "f" visible.

Handwritten musical notation for the first system. The top staff is in treble clef and the bottom staff is in bass clef. The key signature has three sharps (F#, C#, G#). The first staff begins with a dynamic marking of *mf* and contains a melodic line with slurs and accents. The second staff contains a bass line with chords and rests. A dynamic marking of *f* is present in the second measure of the top staff.

Handwritten musical notation for the second system. The top staff contains several measures of rests. The bottom staff contains notes with accents and a dynamic marking of *f* in the final measure.

Handwritten musical notation for the third system. The top staff features complex melodic lines with slurs and wavy lines indicating vibrato or tremolo. The bottom staff contains chords and rests. A *Ped.* marking is present in the bottom staff.

Handwritten musical notation for the fourth system. The top staff contains notes with accents and slurs. The bottom staff contains chords and rests.

Handwritten musical notation for the fifth system. The top staff contains a melodic line with slurs and accents. The bottom staff contains chords and rests.

Handwritten musical notation for the sixth system. The top staff contains notes with accents and slurs. The bottom staff contains chords and rests.

Handwritten musical notation on a grand staff. The upper staff contains a complex melodic line with many beamed notes and slurs. The lower staff contains a bass line with chords and rests.

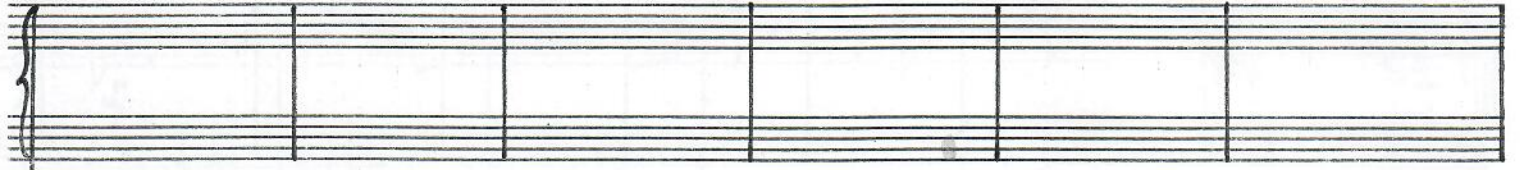
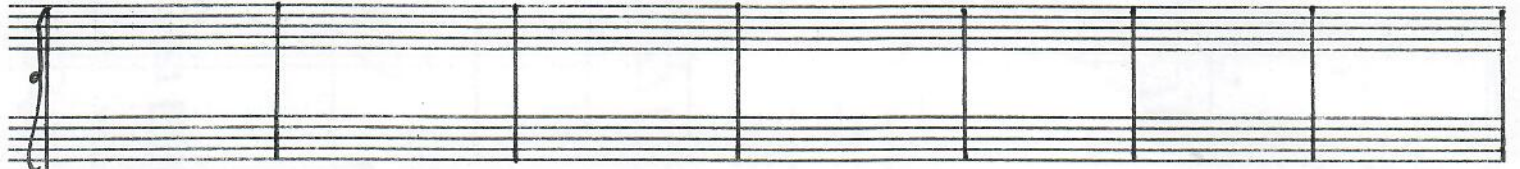
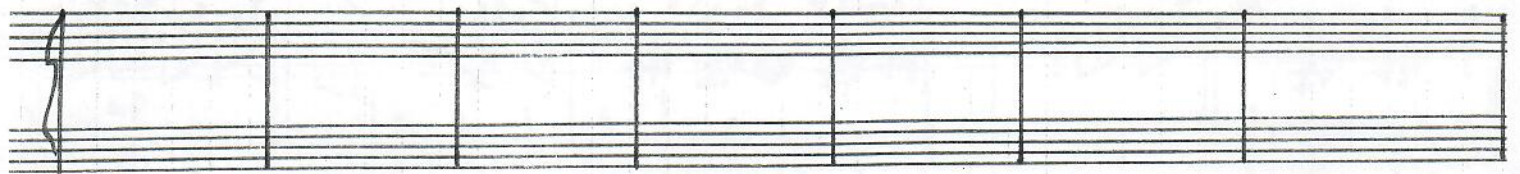
Handwritten musical notation on a grand staff. The upper staff has a few notes with accents and question marks. The lower staff has a few notes with a slur.

Handwritten musical notation on a grand staff. The upper staff has a complex melodic line with many beamed notes and slurs. The lower staff has a bass line with chords and rests.

Handwritten musical notation on a grand staff. The upper staff has a complex melodic line with many beamed notes and slurs. The lower staff has a bass line with chords and rests.

A grand staff with empty staves, indicating a section where the music is not written or has been removed.

Handwritten musical notation on a grand staff. The upper staff has a few notes with slurs. The lower staff has a bass line with chords and rests.



Handwritten musical score system 1. It consists of two staves. The upper staff is in treble clef and contains a melodic line with a dynamic marking of *ff* (fortissimo) and a slur over the final notes. The lower staff is in bass clef and contains a bass line with a slur over the notes. The notation is in a common time signature.

Handwritten musical score system 2. It consists of two staves. The upper staff is in treble clef and contains a melodic line with a slur over the first two measures. The lower staff is in bass clef and contains a bass line with a slur over the first two measures. The notation is in a common time signature.

Handwritten musical score system 3. It consists of two staves. The upper staff is in treble clef and contains a melodic line with a slur over the first two measures. The lower staff is in bass clef and contains a bass line with a slur over the first two measures. The notation is in a common time signature.

This image shows a handwritten musical score on ten staves. The notation is dense and complex, featuring various musical symbols and accidentals. The score is organized into three systems of two staves each, separated by double slashes. The first system (staves 1-2) includes a treble clef and a key signature of one flat (Bb). The second system (staves 3-4) features a treble clef and a key signature of two flats (Bb, Eb), with a dynamic marking of 'f' and a 'poco' marking. The third system (staves 5-6) continues with the two-flat key signature. The fourth system (staves 7-8) shows a key signature change to two sharps (F#, C#) and includes a 'poco' marking. The fifth system (staves 9-10) returns to the one-flat key signature and includes a 'poco' marking. The notation includes notes, rests, accidentals, and dynamic markings, with some notes marked with question marks. The handwriting is clear and legible.

Handwritten musical score for the first system. It consists of two staves: a piano staff (top) and a bass staff (bottom). The piano staff contains several measures of music, including a long horizontal line with a *p* dynamic marking. The bass staff contains more complex notation with various notes and rests. The system concludes with the instruction *poco a poco rit.*

Andante ($\text{♩} = 69$)

Handwritten musical score for the second system. It consists of two staves: a piano staff (top) and a bass staff (bottom). The piano staff begins with a *p lyato* marking and contains a triplet of notes. The bass staff contains a melodic line with a *p cantabile* marking. The system concludes with a *Pad...* marking.

Handwritten musical score for the third system. It consists of two staves: a piano staff (top) and a bass staff (bottom). The piano staff contains a triplet of notes and a *pp* dynamic marking. The bass staff contains a melodic line. The system concludes with a *2 4* time signature.

Handwritten musical notation on a grand staff. The right hand part features a melodic line with various accidentals (sharps, flats, naturals) and slurs. The left hand part consists of chords and single notes. A dynamic marking of *mf* is present.

Handwritten musical notation on a grand staff. The right hand part has a melodic line with slurs and a dynamic marking of *p*. The left hand part has chords and a dynamic marking of *mf*. There is a handwritten note "Ped..." with a dotted line.

Handwritten musical notation on a grand staff. The right hand part features a melodic line with slurs and a dynamic marking of *f*. The left hand part has chords and a dynamic marking of *mf*.

Handwritten musical notation on a grand staff. The right hand part has a melodic line with slurs and a dynamic marking of *f*. The left hand part has chords and a dynamic marking of *mf*.

Handwritten musical notation on a grand staff. The right hand part features a melodic line with slurs and a dynamic marking of *p*. The left hand part has chords and a dynamic marking of *mf*.

Handwritten musical notation on a grand staff. The right hand part has a melodic line with slurs and a dynamic marking of *mf*. The left hand part has chords and a dynamic marking of *mf*.

Handwritten musical notation on a grand staff. The upper staff contains a few notes with stems, and the lower staff contains a few notes with stems. The notation is sparse and appears to be the beginning of a piece.

Handwritten musical notation on a grand staff. The upper staff features a series of notes with stems, followed by a melodic line with a slur and a fermata. The lower staff contains chords and single notes.

Handwritten musical notation on a grand staff. The upper staff is filled with a complex, dense melodic line featuring many notes, slurs, and ornaments. The lower staff contains chords and single notes, some with slurs.

Handwritten musical notation on a grand staff. The upper staff is mostly empty, with a few notes at the end. The lower staff contains chords and single notes, some with slurs.

Handwritten musical notation on a grand staff. The upper staff contains a complex, dense melodic line with many notes, slurs, and ornaments. The lower staff contains chords and single notes, some with slurs.

Handwritten musical notation on a grand staff. The upper staff contains a complex, dense melodic line with many notes, slurs, and ornaments. The lower staff contains chords and single notes, some with slurs.

Handwritten musical notation on a grand staff. The upper staff contains a complex, dense melodic line with many notes, slurs, and ornaments. The lower staff contains chords and single notes, some with slurs.

Handwritten musical notation on two staves. The right staff features a trill marked "(trillo rit.)" and a fermata. The left staff contains various notes and rests.

Handwritten musical notation on two staves. The right staff includes a trill marked "(trillo rit.)" and a fermata. The left staff contains various notes and rests.

Handwritten musical notation on two staves. The right staff includes a trill marked "(trillo rit.)" and a fermata. The left staff contains various notes and rests.

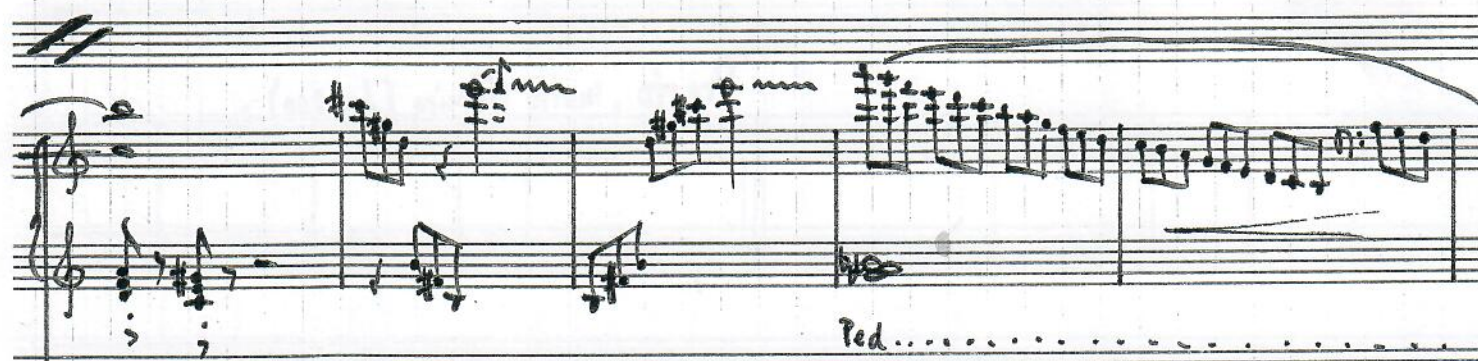
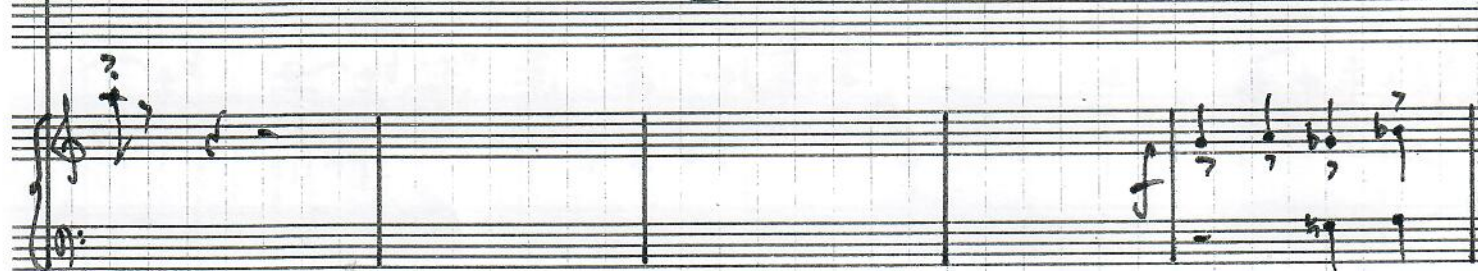
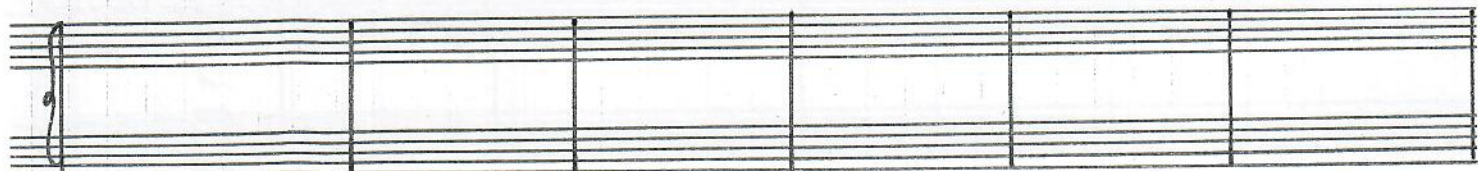
Handwritten musical notation on two staves. The right staff features a large glissando marked "gliss." and "gliss." with a fermata. The left staff includes a dotted line labeled "ped." and a fermata. Below the staves, the text "con Ped" and "sempre" is written.

Handwritten musical notation on two staves, mostly blank.

Handwritten musical notation on two staves. The right staff includes a trill marked "(trillo rit.)" and a fermata. The left staff contains various notes and rests.

sempre ripetere glissando

Presto, molto ritmico (♩ = 200)



Handwritten musical notation for the first system. The top staff is in treble clef, showing a melodic line with a long slur over the first four measures. The bottom staff is in bass clef, providing accompaniment with chords and rests. The key signature has one sharp (F#).

Handwritten musical notation for the second system. The top staff is in treble clef, containing a few notes and rests. The bottom staff is in bass clef, also containing a few notes and rests. The key signature has one sharp (F#).

Handwritten musical notation for the third system. The top staff is in treble clef, showing a melodic line with a long slur over the first four measures. The bottom staff is in bass clef, providing accompaniment with chords and rests. The key signature has one sharp (F#).

Handwritten musical notation for the fourth system. The top staff is in treble clef, showing a melodic line with a long slur over the first four measures. The bottom staff is in bass clef, providing accompaniment with chords and rests. The key signature has one sharp (F#).

Handwritten musical notation for the fifth system. The top staff is in treble clef, showing a melodic line with a long slur over the first four measures. The bottom staff is in bass clef, providing accompaniment with chords and rests. The key signature has one sharp (F#).

Handwritten musical notation for the sixth system. The top staff is in treble clef, showing a melodic line with a long slur over the first four measures. The bottom staff is in bass clef, providing accompaniment with chords and rests. The key signature has one sharp (F#).

Handwritten musical notation for the first system, featuring a treble and bass clef with a key signature of one sharp (F#) and a common time signature (C). The notation includes a complex chordal structure in the first measure followed by several empty measures.

Handwritten musical notation for the second system, showing a melodic line in the treble clef and a supporting bass line in the bass clef. The notation includes various note values and rests.

A system of two empty musical staves, one for the treble clef and one for the bass clef.

Handwritten musical notation for the fourth system, continuing the melodic and bass lines from the second system. It includes dynamic markings such as 'p' and 'f'.

A system of two empty musical staves, one for the treble clef and one for the bass clef.

Handwritten musical notation for the sixth system, featuring a melodic line in the treble clef and a bass line in the bass clef. It includes a dynamic marking 'f' and a fermata over the final note.

An empty musical staff consisting of five horizontal lines.

A system of musical notation. The upper staff contains a melodic line with eighth and sixteenth notes, including accents and slurs. The lower staff contains a bass line with chords and single notes.

An empty musical staff consisting of five horizontal lines.

A system of musical notation. The upper staff features a melodic line with a long slur and various note values. The lower staff contains a bass line with chords and a dynamic marking of **ff** (fortissimo).A system of musical notation. The upper staff has a melodic line with a long slur and a dynamic marking of **ff**. The lower staff contains a bass line with chords and the word **allegro** written three times.A system of musical notation. The upper staff contains a melodic line with slurs and various note values. The lower staff contains a bass line with chords and a dynamic marking of **ff**.

Handwritten musical notation, first system. Treble clef, *mf* dynamic. Features a melodic line with a slur and a bass line with chords and rests.

Handwritten musical notation, second system. Treble clef. Features a melodic line with a slur and a bass line with chords and rests.

Handwritten musical notation, third system. Treble clef. Features a melodic line with a slur and a bass line with chords and rests.

Handwritten musical notation, fourth system. Treble clef, *mf* dynamic. Features a melodic line with a slur and a bass line with chords and rests.

Handwritten musical notation, fifth system. Treble clef. Features a melodic line with a slur and a bass line with chords and rests.

Handwritten musical notation, sixth system. Treble clef. Features a melodic line with a slur and a bass line with chords and rests.

Handwritten musical notation for the first system. The top staff is in treble clef and contains several notes with a slur over them. The bottom staff is in bass clef and has a forte 'f' dynamic marking. There are some handwritten corrections or additions above the notes.

Handwritten musical notation for the second system. Both staves show complex rhythmic patterns with many notes and stems. There are some question marks above certain notes, possibly indicating uncertainty or a specific performance instruction.

Handwritten musical notation for the third system. It begins with a double bar line. The notation is dense with many notes and stems. Dynamic markings include 'ff' (fortissimo) and 'f' (forte). There are also some slurs and accents.

Handwritten musical notation for the fourth system. The top staff is in treble clef and contains a series of notes. Below the staff, there is a 'Ped...' instruction, likely for a pedal point. The notation continues with more notes and stems.

Handwritten musical notation for the fifth system. It includes a 'Ped... sempre...' instruction. At the bottom of the system, there is the text 'poco a poco allargando' written in a cursive hand, indicating a gradual slowing down of the tempo.

Handwritten musical score for guitar, consisting of five staves. The top staff contains a melodic line with a long slur over the first two measures and a *pesante* marking above the third measure. The second staff shows a bass line with a long slur over the first two measures. The third staff contains a few notes with a slur. The fourth staff features a wavy line with a dotted line underneath, and an *allargando* marking below it. The fifth staff has a dotted line with a *pesante* marking below it. The score concludes with a double bar line.