

Petr Fiala

"Contraste"

Kontrasty

pro housle, kytaru a akordeon

| 1976 |

I. misterioso e ruvido

II. feroce e molto veloce

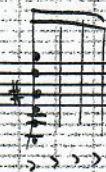
III. meditativo e delicatissimo

IV. allegro e brillante

(Durata cca 12')

Poznámka: Posuvka platí zásadně jen pro jednu notu.

frusta = nadzvednout strunu palcem levé ruky nad otvorem - struna praškuje o hmatník



= opakování těchto akordů

misterioso e ruvido

1.

3

Violino

♩ = 60

chitarra

♩ = 60

ordone

p legato

ff (secco)

♩ = 60

ff (secco)

trem

♩ = 60

♩ = 92

f *trioletto*

♩ = 60 (sempre)

Violino

$\text{♩} = 92$

f *detache e molto espress.*

Violoncello

$\text{♩} = 92$

f *risoluto*

secco

Violino

pp

Violoncello

pp

Violino

Violoncello

ff *molto espress.*

Violino

$\text{♩} = 60$

p *legato*

Violoncello

Violino

ff

Violoncello

ff

Violino

Violoncello

colla parte *violino e chitarra*

ff (cca 4-5")

ff (rasquado) (cca 4-5")

colla parte di acordeon

$\text{♩} = 60$

pp *f legato*

chitarra

$\text{♩} = 92$

ff

senza ritmo regolare

frusta

ff naturale

senza ritmo regolare *pp veloce, brillante*

pp

viola

chitarra

mf

pp veloce, brillante

pp (senza vibrato)

pp

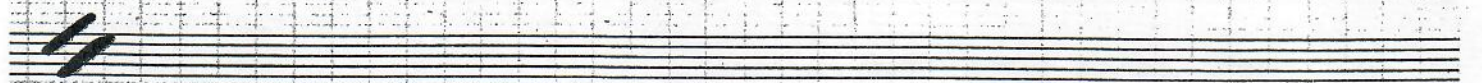
pp

$\text{♩} = 60$

$\text{♩} = 60$

Handwritten musical score for the first system, featuring a Violin and Clarinet part. The Violin part begins with a treble clef, a key signature of one sharp (F#), and a dynamic marking of *ff*. The Clarinet part is written in a lower register with a treble clef and includes dynamic markings of *nat.*, *legno*, and *ff*. The system concludes with a *simile* marking and a series of notes.

Handwritten musical score for the second system, featuring a second Violin part. The part begins with a treble clef, a key signature of one sharp (F#), and a dynamic marking of *ff*. The system concludes with a series of notes.



Handwritten musical score for the third system, featuring a single treble clef staff with a series of notes and a dynamic marking of *ff*.

Handwritten musical score for the fourth system, featuring a single treble clef staff with notes and dynamic markings of *ff*, *nat.*, and *frustra*.

Handwritten musical score for the fifth system, featuring a single treble clef staff with notes and a dynamic marking of *mf*.



Handwritten musical score for the sixth system, featuring a single treble clef staff with notes and a dynamic marking of *ff*.

Handwritten musical score for the seventh system, featuring a single treble clef staff with notes and a dynamic marking of *ff*.

Handwritten musical score for the eighth system, featuring a single treble clef staff with notes and a dynamic marking of *ff*.

Handwritten musical score for the first system. The top staff is a treble clef staff containing a melodic line with eighth and sixteenth notes, including accidentals such as flats and naturals. Below it is a grand staff with a bass clef staff, which is mostly empty with some faint markings.

Handwritten musical score for the second system. The top staff is a treble clef staff with a melodic line that includes a wavy line, possibly indicating a tremolo or vibrato. Below it is a grand staff with a bass clef staff containing complex chordal structures with many notes and accidentals.

Handwritten musical score for the third system. The top staff is a treble clef staff with a melodic line that includes a wavy line and the word "plur." written above it. Below it is a grand staff with a bass clef staff containing complex chordal structures with many notes and accidentals.

Handwritten musical notation for the first system, consisting of two staves. The top staff contains a melodic line with eighth and sixteenth notes, some with accents. The bottom staff contains a bass line with chords and eighth notes. A double bar line is present at the end of the system.

Handwritten musical notation for the second system, consisting of two staves. The top staff continues the melodic line with various dynamics like "ff" and "f". The bottom staff continues the bass line with chords and eighth notes.

Handwritten musical notation for the third system, consisting of two staves. The top staff has a long melodic line with a slur. The bottom staff has a long bass line with a slur and chords.

Handwritten musical notation for the fourth system, consisting of three staves. The top staff has a treble clef and a few notes with a "5" above. The middle staff has a treble clef and a complex melodic line with many sixteenth notes. The bottom staff has a bass clef and a complex bass line with many sixteenth notes. Dynamics include "mf" and "f". A "2nd ending" is marked.

3

Handwritten musical score for system 3, measures 1-5. The system includes a treble clef staff with a 3/4 time signature, a piano staff with a 3/4 time signature, and a grand staff. The music features dynamic markings such as *ff* and *mf*, and a key signature change to D major indicated by a sharp sign. The notation includes various rhythmic values and articulation marks.

4

Handwritten musical score for system 4, measures 1-4. The system includes a treble clef staff with a 4/4 time signature, a piano staff with a 4/4 time signature, and a grand staff. The music features dynamic markings such as *ff* and *mf*. The notation includes various rhythmic values and articulation marks.

Handwritten musical score for system 5, measures 1-4. The system includes a treble clef staff with a 4/4 time signature, a piano staff with a 4/4 time signature, and a grand staff. The music features dynamic markings such as *ff*. The notation includes various rhythmic values and articulation marks.

Handwritten musical notation on a grand staff. The upper staff contains a melodic line with eighth and sixteenth notes, including accidentals (flats and sharps) and slurs. The lower staff contains a bass line with chords and some notes.

Handwritten musical notation on a grand staff. The upper staff has a melodic line with slurs and rests. The lower staff has a bass line with chords and notes.

Handwritten musical notation on a grand staff. The upper staff has a melodic line with slurs and rests. The lower staff has a bass line with chords and notes.

Handwritten musical notation on a grand staff. The upper staff has a melodic line with slurs and rests. The lower staff has a bass line with chords and notes.

Handwritten musical notation on a grand staff. The upper staff has a melodic line with slurs and rests. The lower staff has a bass line with chords and notes.

Handwritten musical notation on a grand staff. The upper staff has a melodic line with slurs and rests. The lower staff has a bass line with chords and notes.

Handwritten musical notation for the first system, featuring a treble clef staff with a complex melodic line and a bass clef staff with a simpler accompaniment. The key signature has two sharps (F# and C#).

Handwritten musical notation for the second system, showing a treble clef staff with a melodic line and a bass clef staff with a bass line. Dynamics include "f" and "ff". A slur covers the first two measures of the treble staff.

Handwritten musical notation for the third system, including a treble clef staff with a melodic line and a bass clef staff. It features a "poco rit." marking, a "3" above a measure, and a "5" above another. The system ends with "a tempo" and "f" dynamics.

Handwritten musical notation for the fourth system, showing a treble clef staff with a melodic line and a bass clef staff. It includes "poco rit." and "a tempo" markings, and features a large, complex chordal structure in the final measures.

Handwritten musical notation for the fifth system, featuring a treble clef staff with a melodic line and a bass clef staff with a bass line. It includes "f" dynamics and a "poco a poco cresce..." marking.

Handwritten musical notation for the sixth system, showing a treble clef staff with a melodic line and a bass clef staff. It includes "mf" dynamics and a slur over the final measures.

ff

Handwritten musical score for the first system, consisting of two staves. The notation is dense with notes, rests, and dynamic markings. The first staff begins with a treble clef and a key signature of one flat. The second staff begins with a bass clef. The music is characterized by complex rhythmic patterns, including sixteenth and thirty-second notes, and rests. A dynamic marking of *ff* (fortissimo) is present in the second staff. The system concludes with a double bar line.

Handwritten musical score for the second system, consisting of two staves. The notation continues with complex rhythmic patterns and melodic lines. The first staff begins with a treble clef and a key signature of one flat. The second staff begins with a bass clef. The music is characterized by complex rhythmic patterns, including sixteenth and thirty-second notes, and rests. A dynamic marking of *ff* (fortissimo) is present in the second staff. The system concludes with a double bar line.

Handwritten musical score for the third system, consisting of two staves. The notation includes performance instructions such as *pizz.* (pizzicato) and *arco pesante* (heavy bow). The first staff begins with a treble clef and a key signature of one flat. The second staff begins with a bass clef. The music is characterized by complex rhythmic patterns and melodic lines. A dynamic marking of *ff* (fortissimo) is present in the second staff. The system concludes with a double bar line.

♩ = 50

meditativo e delicatissimo

Violino

pp sempre legato

lasciare sonare

clavicembalo

Handwritten musical notation on a grand staff. The upper staff contains several chords with accidentals (sharps and naturals). The lower staff contains a melodic line with eighth and sixteenth notes, some beamed together, and rests.

Handwritten musical notation on a grand staff. The upper staff has a few notes and rests. The lower staff has a melodic line starting with a piano (*pp*) dynamic marking, followed by a long note and a final note with a fermata.

Handwritten musical notation on a grand staff. The upper staff contains chords with the instruction "senza sord." and a sharp sign. The lower staff contains a melodic line with eighth notes and rests.

Handwritten musical notation on a grand staff. The upper staff has a wavy line above it. The lower staff has a melodic line starting with a piano (*pp*) dynamic marking, followed by a long note and a final note with a fermata.

Handwritten musical notation on a grand staff. The upper staff contains chords with accidentals. The lower staff contains a melodic line with eighth notes and rests.

Handwritten musical notation on a grand staff. The upper staff has a few notes and rests. The lower staff has a melodic line with a few notes and rests.

Handwritten musical notation, first system. Treble clef, key signature of one sharp (F#). The system contains two staves with various notes, rests, and dynamic markings such as *pp* and *ppp*.

Handwritten musical notation, second system. Treble clef. The system contains two staves with notes and rests. A dynamic marking of *pp legato* is present.

Handwritten musical notation, third system. Treble clef. The system contains two staves with notes and rests. A dynamic marking of *pp* is present. There are handwritten numbers '4' and '3' above the staves.

Handwritten musical notation, fourth system. Treble clef. The system contains two staves with notes and rests.

Handwritten musical notation, fifth system. Treble clef. A tempo marking of $\text{♩} = 60$ is in a box. The system contains two staves with notes and rests. A dynamic marking of *ff* is present.

Handwritten musical notation, sixth system. Treble clef. The system contains two staves with notes and rests. A dynamic marking of *sub. ff* is present. There are handwritten numbers '4' and '3' above the staves.

$\text{♩} = 50$

Handwritten musical notation on a grand staff. The right hand part features a melodic line with slurs and accents, starting with a pp dynamic and a *legato* marking. The left hand part has a bass line with a *z.s.* (zweite Stimme) marking. A *simile* marking is present in the right hand. The tempo is indicated as $\text{♩} = 50$.

Handwritten musical notation on a grand staff, primarily consisting of rests in both hands.

Handwritten musical notation on a grand staff. The right hand part includes a *con sord.* (con sordina) marking and a *pizz. e molto vibrato* marking. The left hand part has a pp dynamic marking.

Handwritten musical notation on a grand staff, primarily consisting of rests in both hands.

Handwritten musical notation on a grand staff. The right hand part features a melodic line with slurs and accents, starting with a pp dynamic. The left hand part has a bass line with a pp dynamic marking.

Handwritten musical notation on a grand staff, primarily consisting of rests in both hands.

Handwritten musical score on a grand staff. The upper system contains a treble clef staff with a key signature of one sharp (F#) and a 3/4 time signature. The lower system contains a bass clef staff. The music features various notes, rests, and dynamic markings such as *pp* and *ppp*. A performance instruction *con sord. arco* is written above the treble staff. The system concludes with a double bar line and a fermata over the final note.

Handwritten musical score on a grand staff. The upper system contains a treble clef staff with a key signature of one sharp (F#) and a 3/4 time signature. The lower system contains a bass clef staff. The music features various notes, rests, and dynamic markings such as *pp* and *ppp*. A performance instruction *meno a poco rit.* is written above the treble staff. The system concludes with a double bar line and a fermata over the final note.

Handwritten musical score on a grand staff. The upper system contains a treble clef staff with a key signature of one sharp (F#) and a 3/4 time signature. The lower system contains a bass clef staff. The music features various notes, rests, and dynamic markings such as *ppp*. A performance instruction *lasciare sonare* is written above the treble staff. The system concludes with a double bar line and a fermata over the final note.

♩ = 138 - 144

allegro e brillante

IV.

Handwritten musical notation for the first system, including treble and bass staves with notes, rests, and dynamic markings like *ff*.

Handwritten musical notation for the second system, featuring complex rhythmic patterns and dynamic markings.

Handwritten musical notation for the third system, including dynamic markings such as *ff sempre*, *ff (secco)*, and *f frusta*.

Handwritten musical notation for the fourth system, including dynamic markings such as *f legato*.

Handwritten musical notation for the fifth system, including dynamic markings such as *f*.

Handwritten musical score for the first system. It consists of a vocal line (top staff) and a piano accompaniment (bottom two staves). The vocal line begins with a series of eighth notes, followed by a triplet of eighth notes marked with a '3' and a bracket. The piano accompaniment features a melodic line in the right hand and a bass line in the left hand, both with eighth notes and some chords. A double bar line is present at the end of the system.

Handwritten musical score for the second system. It includes a vocal line and a piano accompaniment. The vocal line has a 'natur.' marking above a series of eighth notes. The piano accompaniment continues with eighth notes and chords. A double bar line is present at the end of the system.

Handwritten musical score for the third system. It includes a vocal line and a piano accompaniment. The vocal line has a '2' marking above a series of eighth notes. The piano accompaniment continues with eighth notes and chords. A double bar line is present at the end of the system.

ff *cca 7⁴* *in tempo*

sempre ripetere, poco a poco accelerando *cca 7¹¹* *in tempo*

fff **2**

sempre ripetere, poco a poco accel. *cca 7¹¹* *a tempo*

ff

ff

ff

3

ff

ff

ff

ff

ff

ff

This is a handwritten musical score on a grid background, consisting of several systems of staves. The top system includes a violin or viola staff with a treble clef and a key signature of two sharps (F# and C#). The piano accompaniment is written in a grand staff (treble and bass clefs). The score includes dynamic markings such as *f* (forte) and *ff* (fortissimo), and performance instructions like *legato sempre* (legato throughout). A large handwritten number '2' is placed above the piano staff in the second system. The notation features various note values, rests, and articulation marks.

Handwritten musical score, first system. Treble clef, key signature of one sharp (F#). The music features a melodic line with slurs and a bass line with chords and slurs. Dynamics include *ff* and *pp senza vibrato*. A triplet of eighth notes is marked with a '3' and a slur.

Handwritten musical score, second system. Treble clef, key signature of one sharp (F#). The music features a melodic line with slurs and a bass line with chords and slurs. Dynamics include *sub. pp*.

Handwritten musical score, third system. Treble clef, key signature of one sharp (F#). The music features a melodic line with slurs and a bass line with chords and slurs. Dynamics include *pp*, *ff*, and *ff (secco)*. A *simile* marking is present. A double bar line is followed by a repeat sign.

Handwritten musical score, fourth system. Treble clef, key signature of one sharp (F#). The music features a melodic line with slurs and a bass line with chords and slurs. Dynamics include *ff* and *ff*. A *frustra* marking is present. A triplet of eighth notes is marked with a '3' and a slur. A *legato sempre* marking is present.

Handwritten musical score on a four-staff system. The top two staves are treble clefs, and the bottom two are a grand staff (treble and bass clefs). The music is in a key with one flat (B-flat major or D minor) and a 3/4 time signature. The first staff begins with a forte dynamic marking (**ff**) and contains a melodic line with eighth and sixteenth notes. The second staff contains a bass line with chords and some notes marked with an accent (>) and the word "natur.". The third and fourth staves continue the melodic and harmonic lines respectively.

Handwritten musical score on a four-staff system, continuing from the previous system. It features the same instrumentation and key signature. The melodic line in the top staff continues with various rhythmic patterns, including some beamed notes. The bass line in the bottom two staves provides harmonic support with chords and moving lines.

Handwritten musical score on a four-staff system, continuing the piece. The notation remains consistent with the previous systems. The melodic line shows some chromatic movement, and the bass line continues to provide a steady harmonic foundation. The system concludes with a final cadence in the melodic line.

Handwritten musical score for the first system, featuring treble and bass clefs. The notation includes complex rhythmic patterns and accidentals. A large slur spans across the top of the system. Below the staves, the instruction "poco a poco *allargando*" is written, followed by a dashed line and the word "frustra".

Handwritten musical score for the second system, continuing the melodic and harmonic lines. The notation includes various rhythmic values and dynamic markings. The instruction "a tempo" is written below the staves.

Handwritten musical score for the third system, primarily consisting of sustained notes and chords in both treble and bass clefs. The notation includes dynamic markings such as *pp* and *ppp*.

Handwritten musical score for the fourth system, featuring a section marked "pizz." (pizzicato) and "(alla Bartok)". The notation includes complex rhythmic patterns and dynamic markings. Below the staves, the instruction "poco pesante" is written. The system concludes with sustained notes and chords.